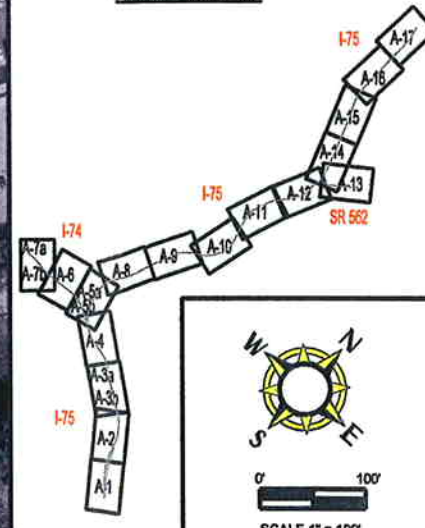


D=3°00'00"  
PI=474+89.37



**MILL CREEK EXPRESSWAY**  
HAM-75-2.30 PID#76257

**SHEET KEY**



0' 100'  
SCALE 1" = 100'

**MAP LEGEND**

- CONCEPTUAL ALTERNATIVE
- EXISTING RIGHT OF WAY
- CONSTRUCTION LIMITS
- RETAINING WALL

**4 LANE CONTINUITY ALTERNATIVE**



T&W SYSTEMS

PDP STEP 5  
MARCH  
2006

**A-16**