



**MILL CREEK EXPRESSWAY  
HAM-75-2.30 PID#76257**

**SHEET KEY**

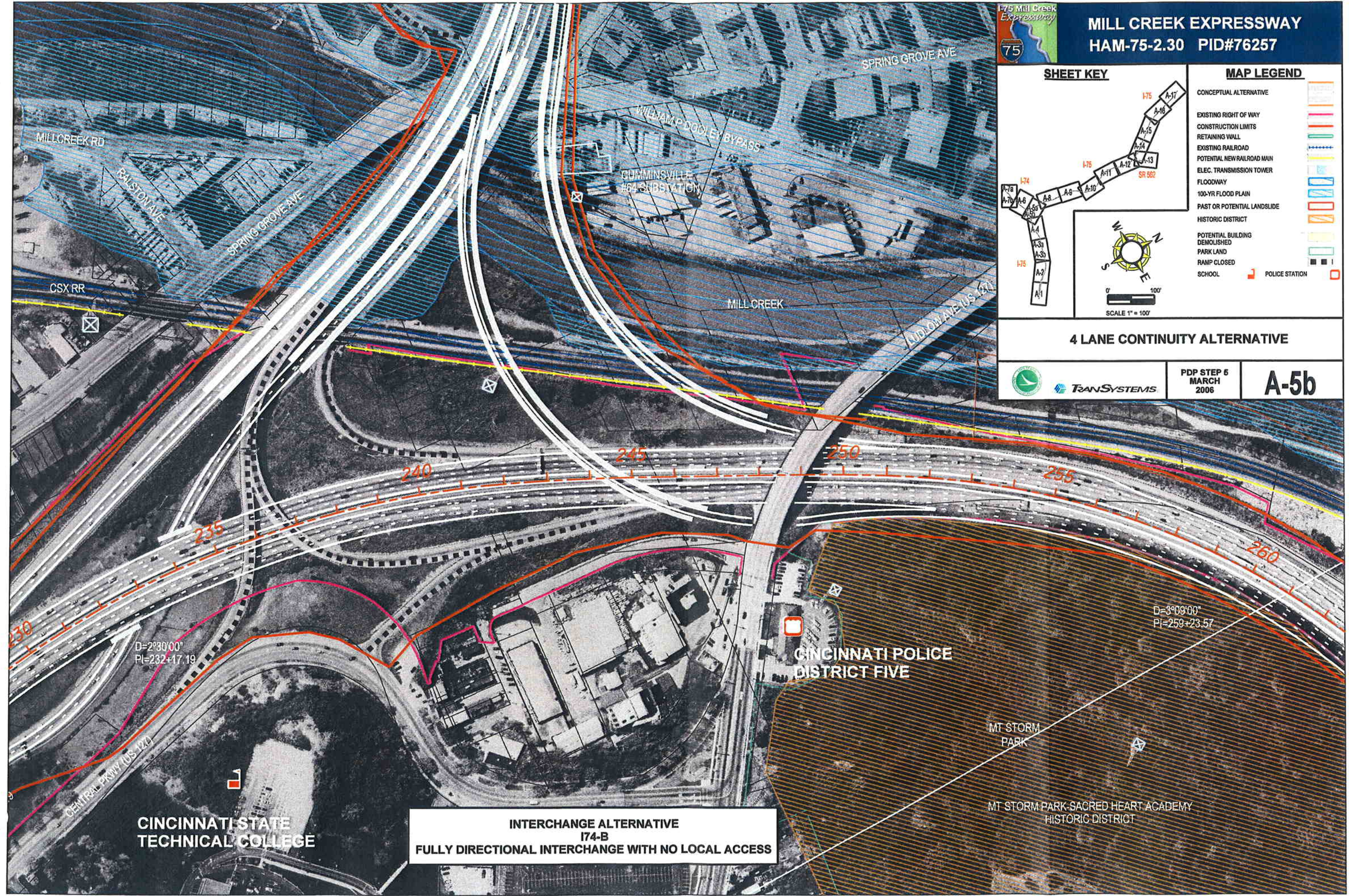
**MAP LEGEND**

- CONCEPTUAL ALTERNATIVE
- EXISTING RIGHT OF WAY
- CONSTRUCTION LIMITS
- RETAINING WALL
- EXISTING RAILROAD
- POTENTIAL NEW RAILROAD MAIN
- ELEC. TRANSMISSION TOWER
- FLOODWAY
- 100-YR FLOOD PLAIN
- PAST OR POTENTIAL LANDSLIDE
- HISTORIC DISTRICT
- POTENTIAL BUILDING DEMOLISHED
- PARK LAND
- RAMP CLOSED
- SCHOOL
- POLICE STATION

SCALE 1" = 100'

**4 LANE CONTINUITY ALTERNATIVE**

PDP STEP 5  
MARCH 2006
A-5b



**CINCINNATI STATE  
TECHNICAL COLLEGE**

**INTERCHANGE ALTERNATIVE  
I74-B  
FULLY DIRECTIONAL INTERCHANGE WITH NO LOCAL ACCESS**

**CINCINNATI POLICE  
DISTRICT FIVE**

MT STORM  
PARK

MT STORM PARK-SACRED HEART ACADEMY  
HISTORIC DISTRICT