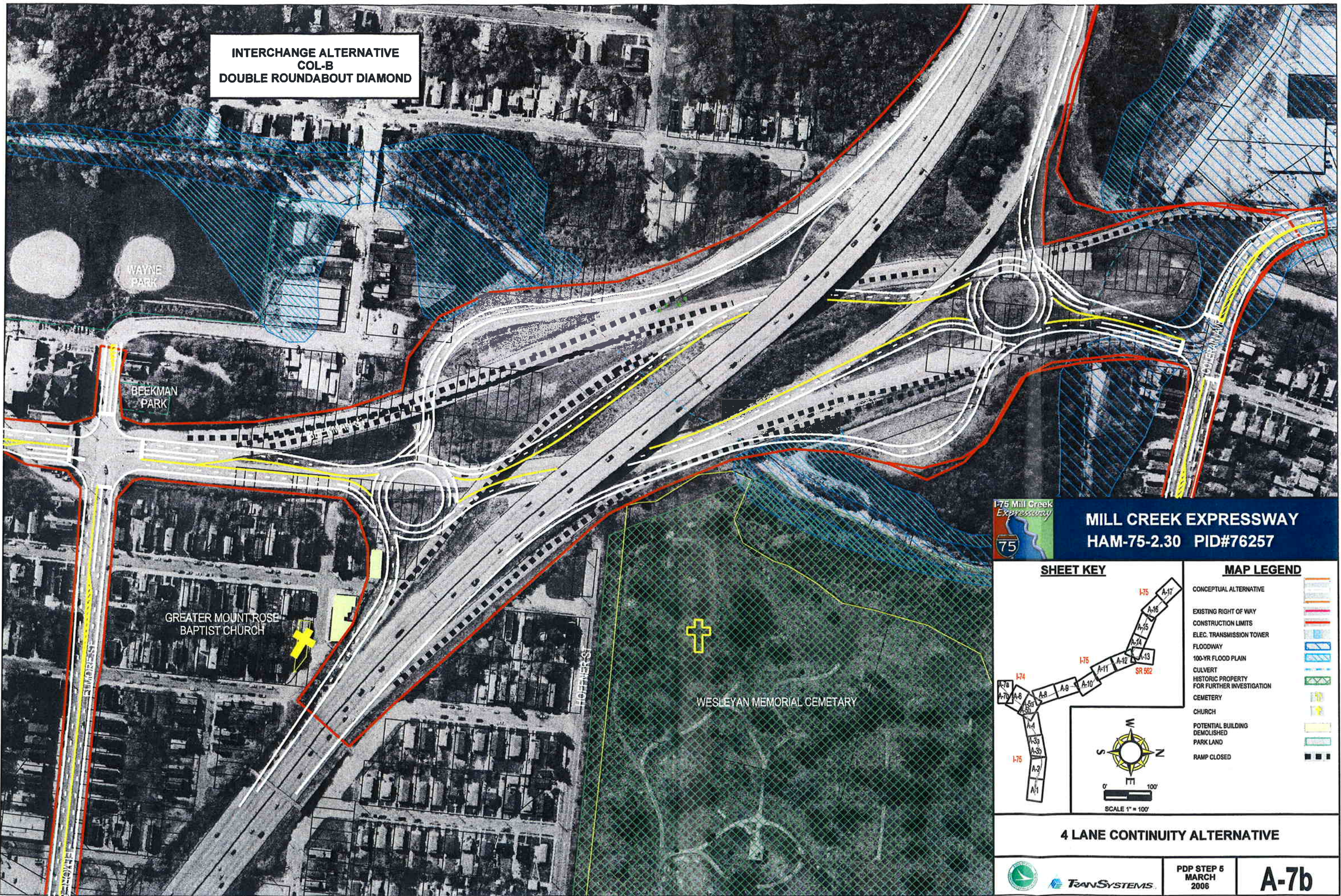
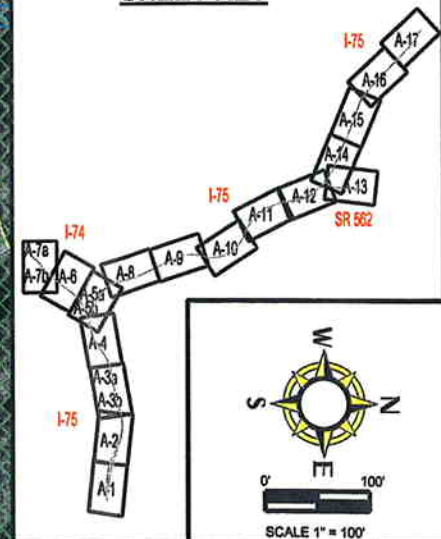


**INTERCHANGE ALTERNATIVE  
COL-B  
DOUBLE ROUNDABOUT DIAMOND**



**MILL CREEK EXPRESSWAY  
HAM-75-2.30 PID#76257**

**SHEET KEY**



**MAP LEGEND**

- CONCEPTUAL ALTERNATIVE
- EXISTING RIGHT OF WAY
- CONSTRUCTION LIMITS
- ELEC. TRANSMISSION TOWER
- FLOODWAY
- 100-YR FLOOD PLAIN
- CULVERT
- HISTORIC PROPERTY FOR FURTHER INVESTIGATION
- CEMETERY
- CHURCH
- POTENTIAL BUILDING DEMOLISHED
- PARK LAND
- RAMP CLOSED

**4 LANE CONTINUITY ALTERNATIVE**



**TRANSYSTEMS**

**PDP STEP 6  
MARCH  
2006**

**A-7b**